

Hampshire Water Transfer and Water Recycling Project Environmental Statement - Figure 8.49 Notable terrestrial invertebrate local record data within the design study area

VOLUME NUMBER: 6

PLANNING INSPECTORATE SCHEME NUMBER: WA010002

APPLICATION DOCUMENT REFERENCE: 6.3

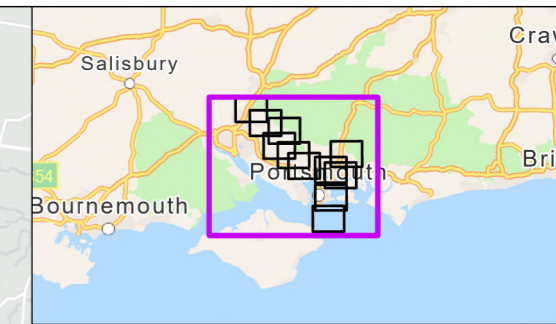
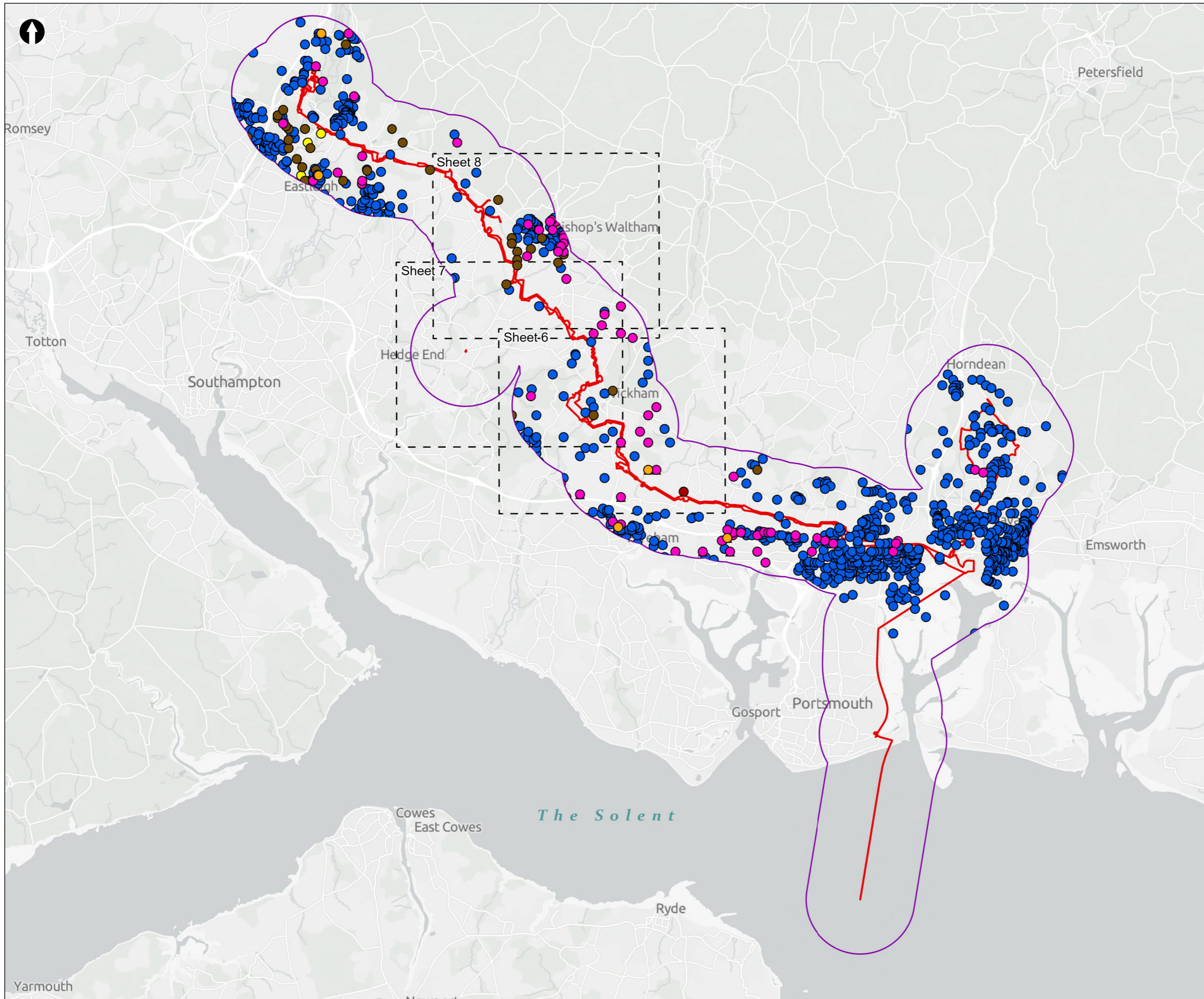
APFP REGULATION: 5(2)(a)

May 2026

Version 0



from
**Southern
Water** 



▭ Order Limits
▭ Desk study area
 Sheet Extent Boxes 1:25K

Terrestrial Invertebrates Status

- Schedule 5
- Section 41
- Nationally Rare
- RDB 1
- ▲ RDB 2
- RDB 3
- ▲ Provisional RDB 3
- RDB K
- Nationally Scarce
- Provisional Nationally Scarce

Coordinate system: British National Grid; Datum: OSGB 1936
 Data sources: © Crown copyright and database rights 2026 Ordnance Survey 0100031673. Sources: Esri, TomTom, Garmin, FAO, NOAA, USGS, © OpenStreetMap contributors, and the GIS User Community, Contains OS data © Crown Copyright and database right 2026. Contains data from OS Zoomstack

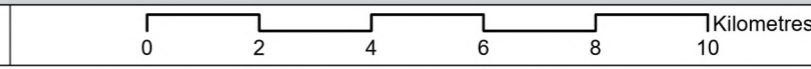
PROJECT TITLE
 Hampshire Water Transfer and Water Recycling Project

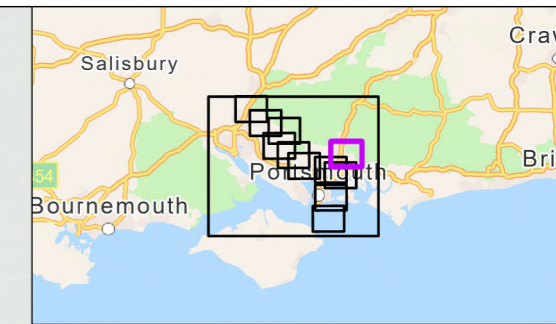
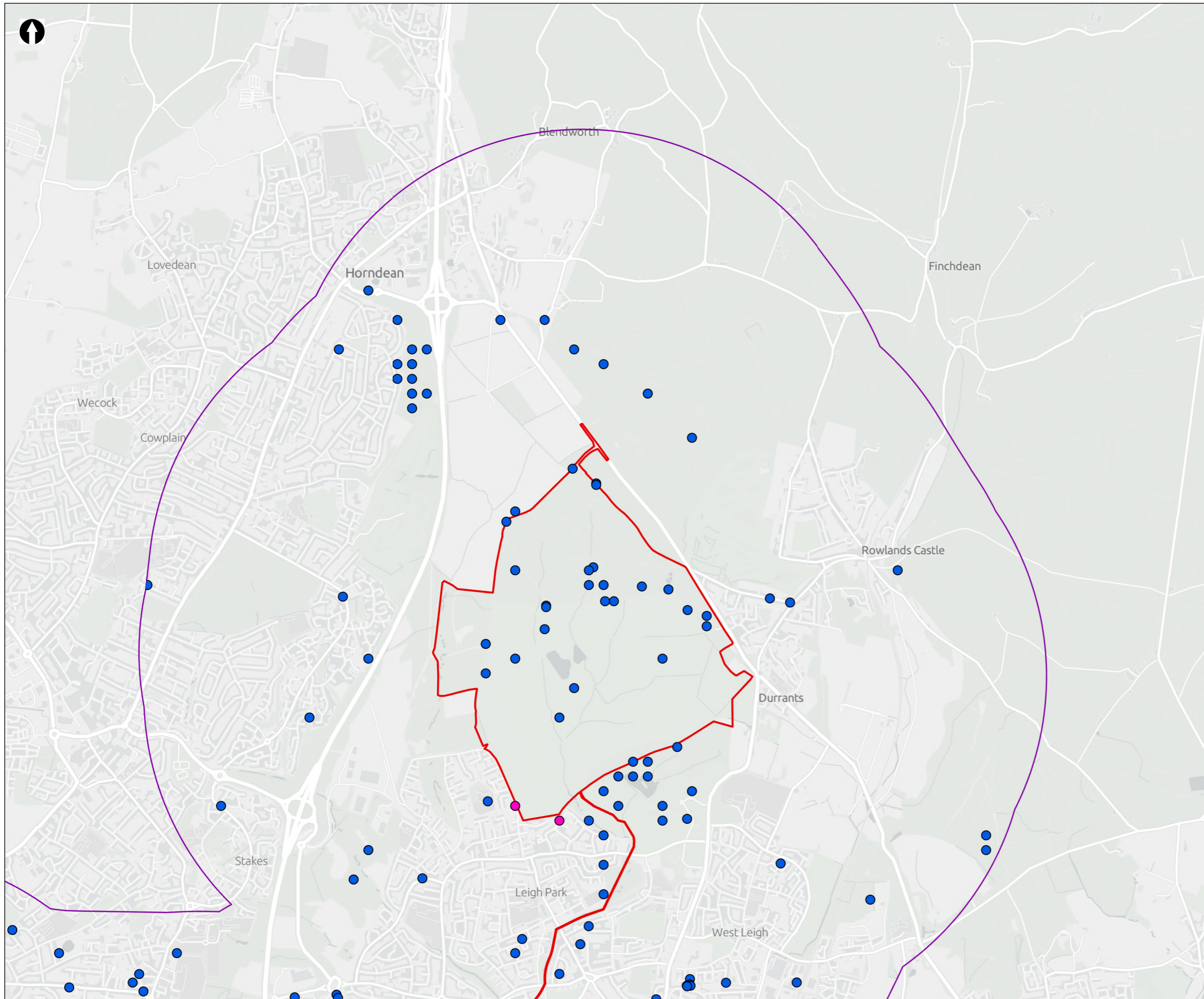


Figure 8.49
 Notable terrestrial invertebrate local record data within the desk study area
 Sheet 1 of 12

Drawn MW	GIS Checked DL	Checked MP	Approved AK
Scale at A3 1:135,000	Status Final	Revision 05	Security STD

Drawing Number **PC5223-RHD-ES-ZZ-D-Z-0073**





Order Limits
 Desk study area

Terrestrial Invertebrates Status

- Section 41
- Nationally Rare
- Nationally Scarce

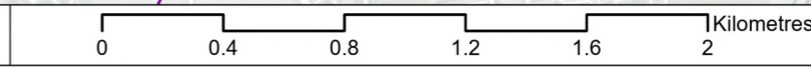
Coordinate system: British National Grid; Datum: OSGB 1936
 Data sources: © Crown copyright and database rights 2026 Ordnance Survey 0100031673. Sources: Esri, TomTom, Garmin, FAO, NOAA, USGS, © OpenStreetMap contributors, and the GIS User Community, Contains OS data © Crown Copyright and database right 2026. Contains data from OS Zoomstack

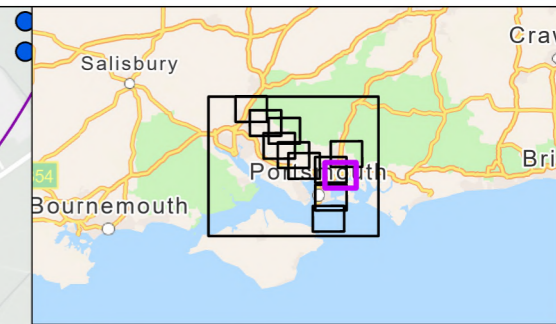
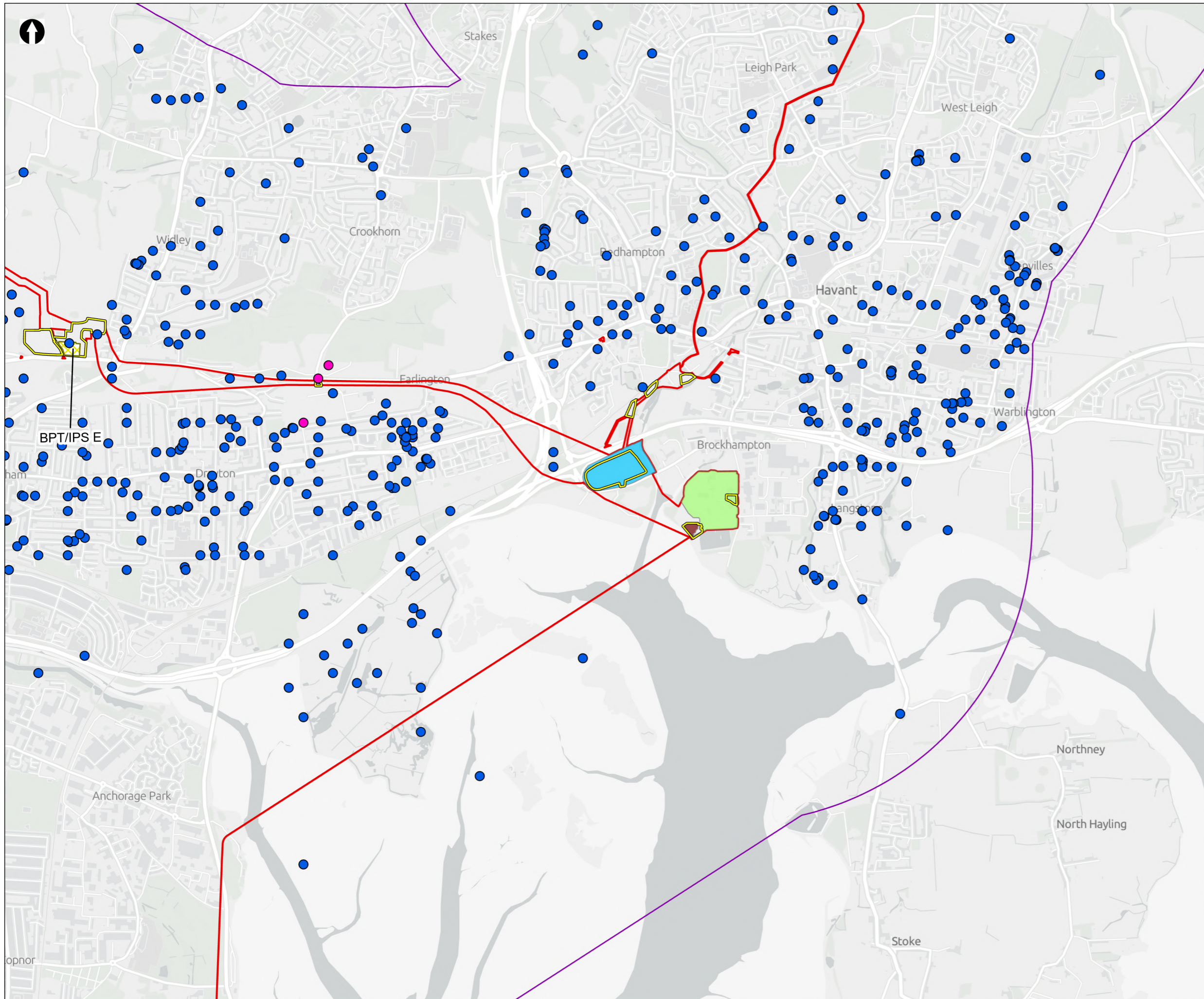
PROJECT TITLE
 Hampshire Water Transfer and Water Recycling Project



Figure 8.49
 Notable terrestrial invertebrate local record data within the desk study area
 Sheet 2 of 12

Drawn MW	GIS Checked DL	Checked MP	Approved AK
Scale at A3 1:25,000	Status Final	Revision 05	Security STD





Order Limits
 Desk study area
 Construction compounds

Proposed Development components

- Budds Farm Wastewater Treatment Works
- Limits of Deviation for Budds Farm Pumping Station
- Water Recycling Plant site

Terrestrial Invertebrates Status

- Section 41
- Nationally Scarce

Above Ground Plant

- Break Pressure Tank & Intermediate Pumping Station

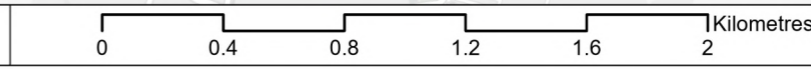
Coordinate system: British National Grid; Datum: OSGB 1936
 Data sources: © Crown copyright and database rights 2026 Ordnance Survey 0100031673. Sources: Esri, TomTom, Garmin, FAO, NOAA, USGS, © OpenStreetMap contributors, and the GIS User Community, Contains OS data © Crown Copyright and database right 2026. Contains data from OS Zoomstack

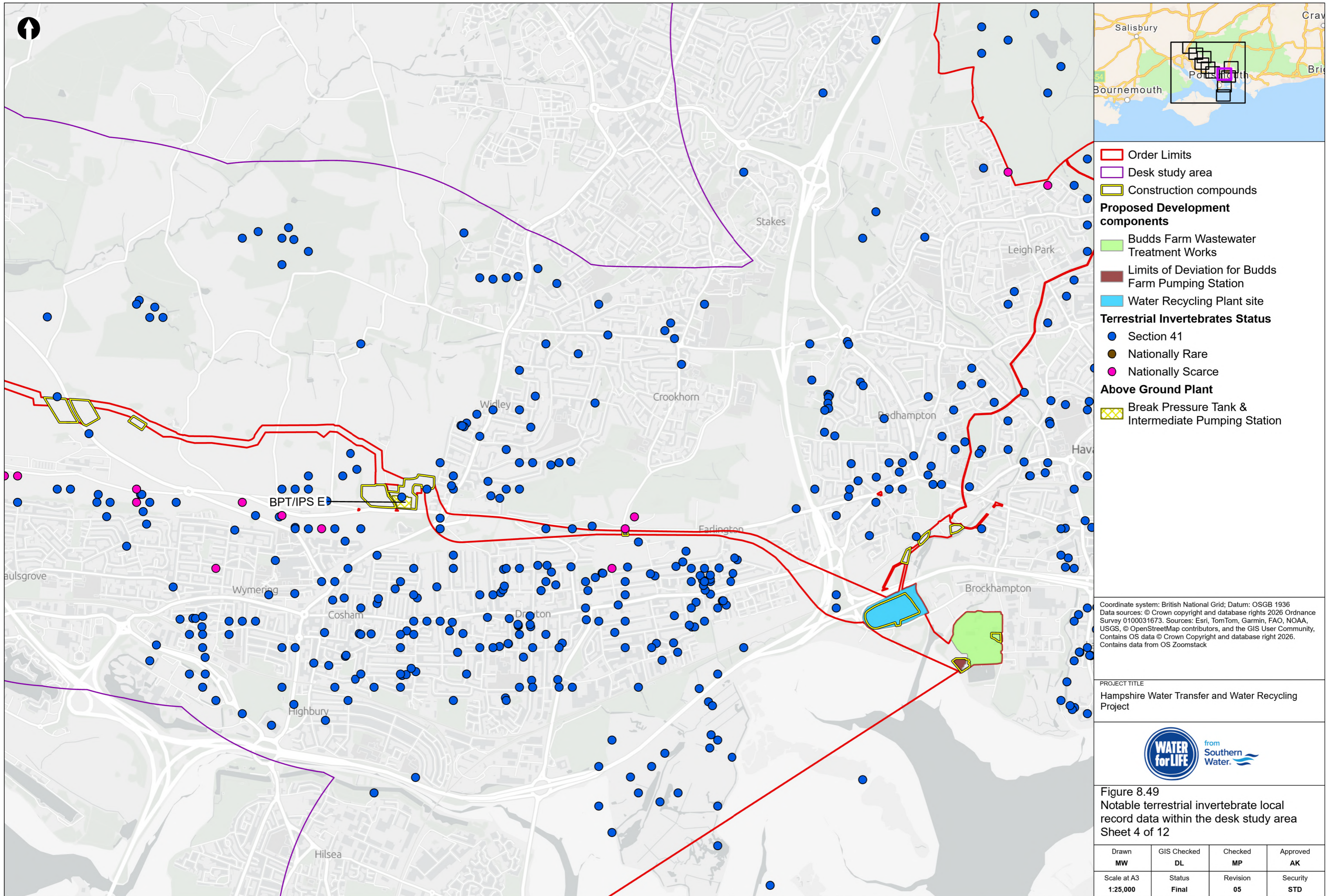
PROJECT TITLE
 Hampshire Water Transfer and Water Recycling Project



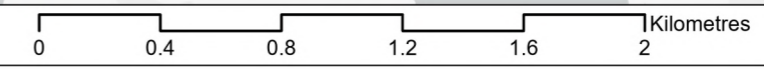
Figure 8.49
 Notable terrestrial invertebrate local record data within the desk study area
 Sheet 3 of 12

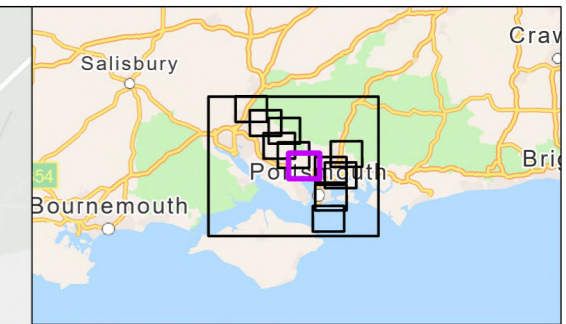
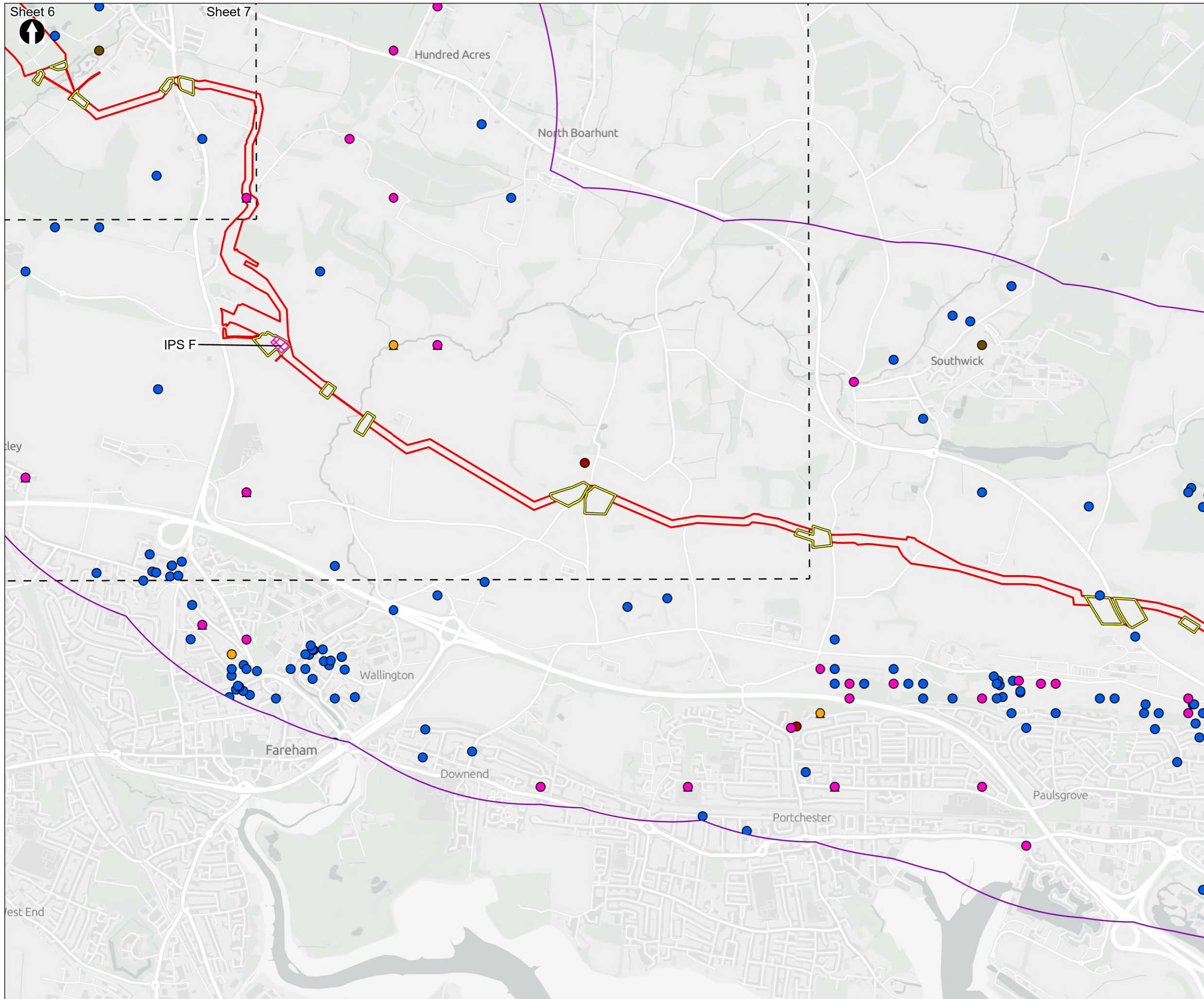
Drawn MW	GIS Checked DL	Checked MP	Approved AK
Scale at A3 1:25,000	Status Final	Revision 05	Security STD





© Southern Water 2026
 This document is issued for the party which commissioned it and for specific purposes connected with the captioned project only. It should not be relied upon by any other party or used for any other purpose.
 We accept no responsibility for the consequences of this document being relied upon by any other party, or being used for any other purpose, or containing any error or omission which is due to an error or omission in data supplied to us by other parties.





Order Limits
 Desk study area
 Sheet Extent Boxes 1:25K
 Construction compounds

Terrestrial Invertebrates Status

- Schedule 5
- Section 41
- Nationally Rare
- RDB 1
- ▲ RDB 2
- RDB 3
- ▲ Provisional RDB 3
- RDB K
- Nationally Scarce
- Provisional Nationally Scarce

Above Ground Plant

- Intermediate Pumping Station

Coordinate system: British National Grid; Datum: OSGB 1936
 Data sources: © Crown copyright and database rights 2026 Ordnance Survey 0100031673. Sources: Esri, TomTom, Garmin, FAO, NOAA, USGS, © OpenStreetMap contributors, and the GIS User Community, Contains OS data © Crown Copyright and database right 2026. Contains data from OS Zoomstack

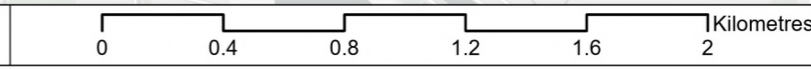
PROJECT TITLE
 Hampshire Water Transfer and Water Recycling Project

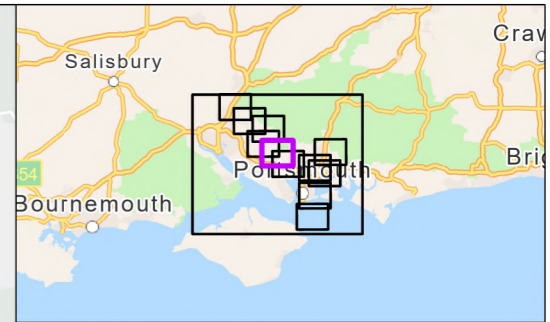
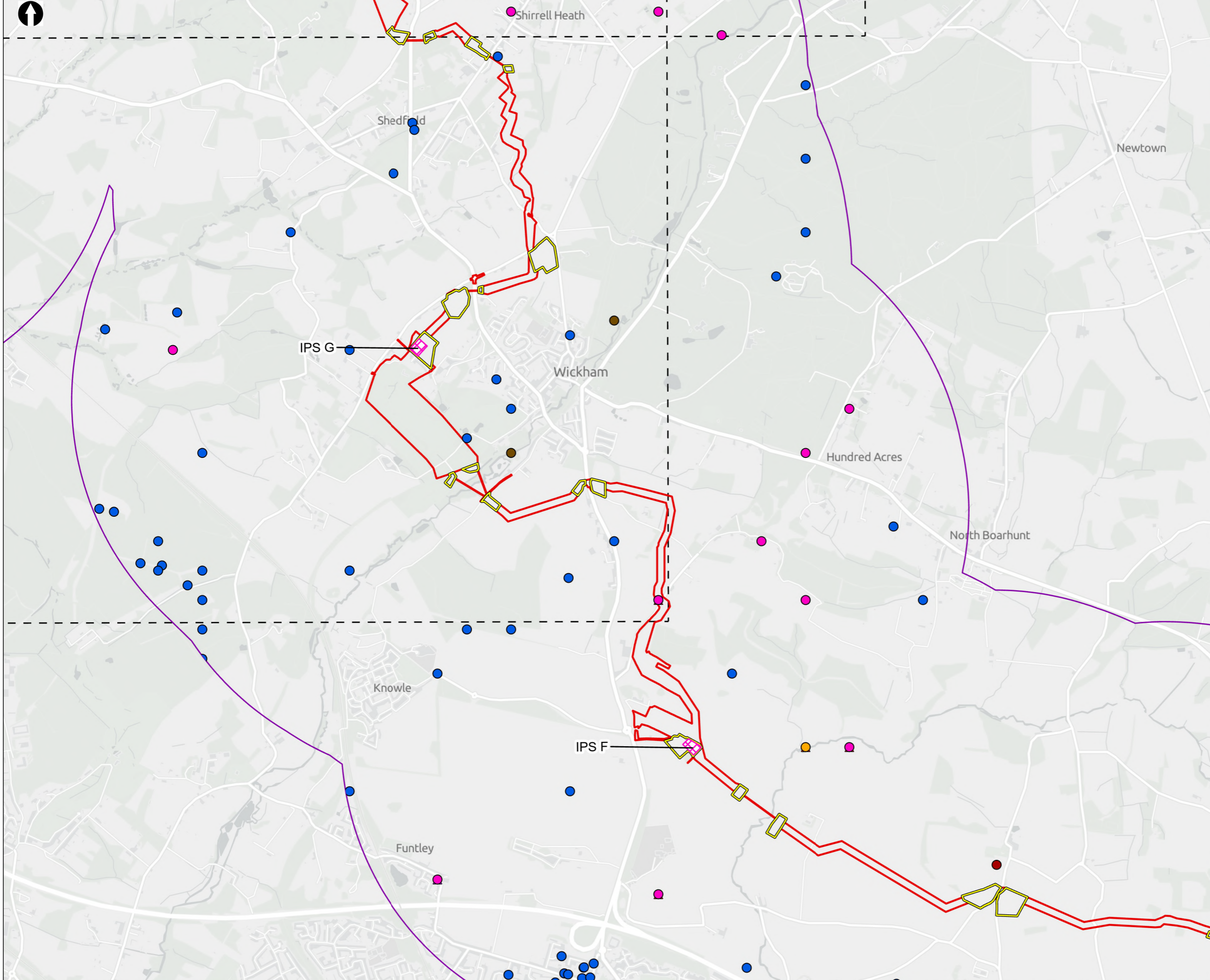


Figure 8.49
 Notable terrestrial invertebrate local record data within the desk study area
 Sheet 5 of 12

Drawn MW	GIS Checked DL	Checked MP	Approved AK
Scale at A3 1:25,000	Status Final	Revision 05	Security STD

Drawing Number **PC5223-RHD-ES-ZZ-D-Z-0073**





Order Limits
 Order Limits

Desk study area
 Desk study area

Sheet Extent Boxes 1:25K
 Sheet Extent Boxes 1:25K

Construction compounds
 Construction compounds

Terrestrial Invertebrates Status

- Section 41
- Nationally Rare
- RDB 1
- ▲ RDB 2
- RDB 3
- ▲ Provisional RDB 3
- RDB K
- Nationally Scarce
- Provisional Nationally Scarce

Above Ground Plant

- Intermediate Pumping Station

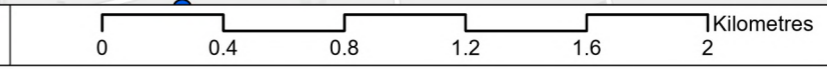
Coordinate system: British National Grid; Datum: OSGB 1936
 Data sources: © Crown copyright and database rights 2026 Ordnance Survey 0100031673. Sources: Esri, TomTom, Garmin, FAO, NOAA, USGS, © OpenStreetMap contributors, and the GIS User Community, Contains OS data © Crown Copyright and database right 2026. Contains data from OS Zoomstack

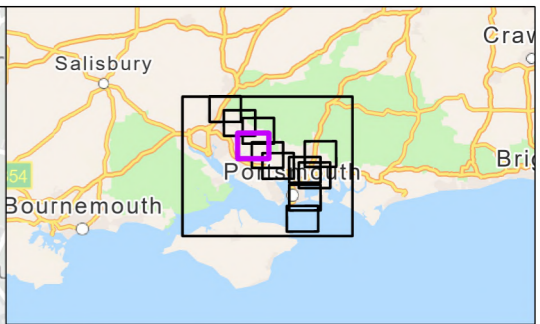
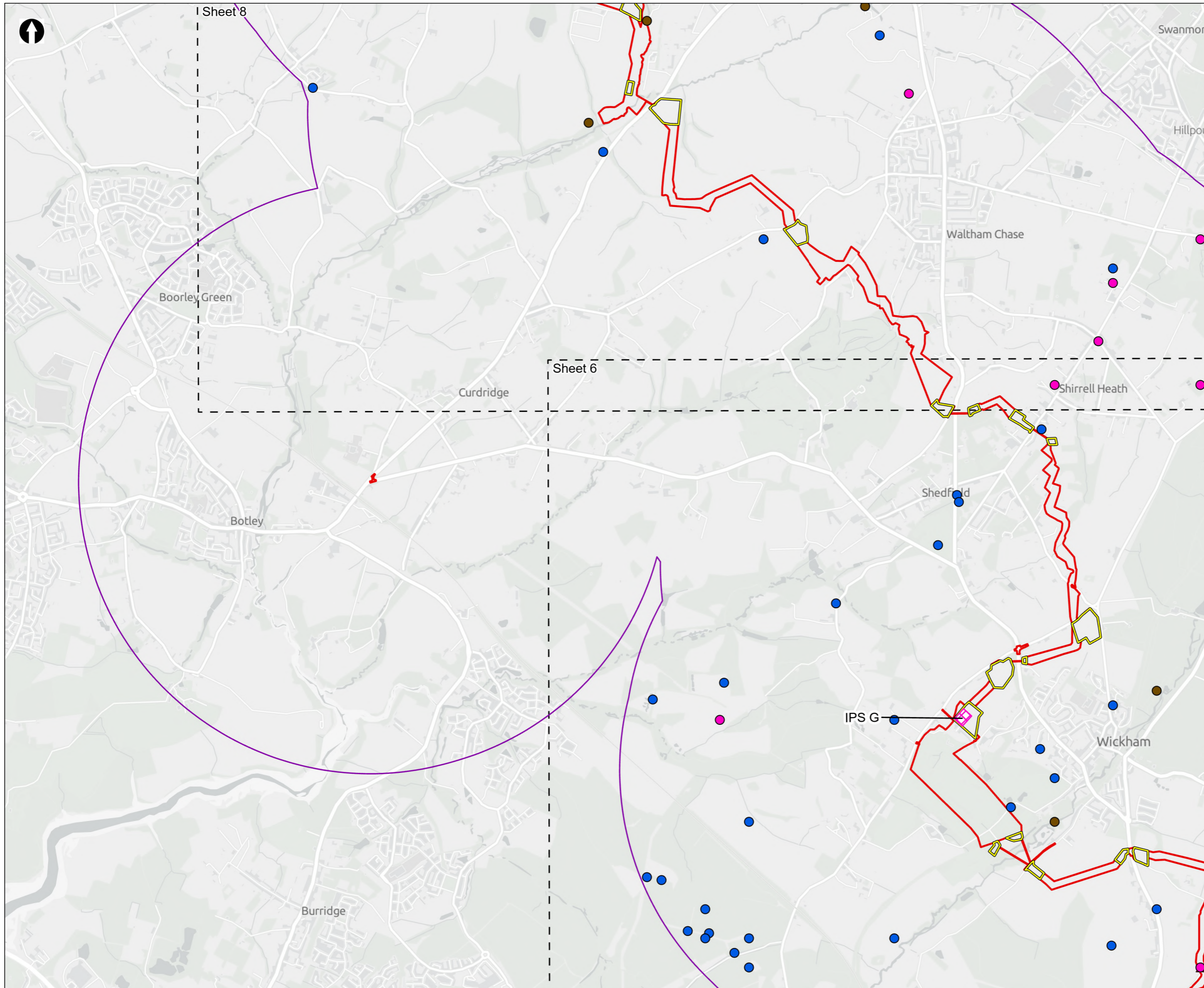
PROJECT TITLE
 Hampshire Water Transfer and Water Recycling Project



Figure 8.49
 Notable terrestrial invertebrate local record data within the desk study area
 Sheet 6 of 12

Drawn MW	GIS Checked DL	Checked MP	Approved AK
Scale at A3 1:25,000	Status Final	Revision 05	Security STD





- Order Limits
- Desk study area
- Sheet Extent Boxes 1:25K
- Construction compounds
- Terrestrial Invertebrates Status**
- Section 41
- Nationally Rare
- RDB 1
- ▲ RDB 2
- RDB 3
- RDB K
- Nationally Scarce
- Above Ground Plant**
- Intermediate Pumping Station

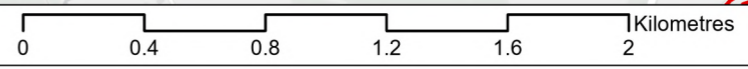
Coordinate system: British National Grid; Datum: OSGB 1936
 Data sources: © Crown copyright and database rights 2026 Ordnance Survey 0100031673. Sources: Esri, TomTom, Garmin, FAO, NOAA, USGS, © OpenStreetMap contributors, and the GIS User Community, Contains OS data © Crown Copyright and database right 2026. Contains data from OS Zoomstack

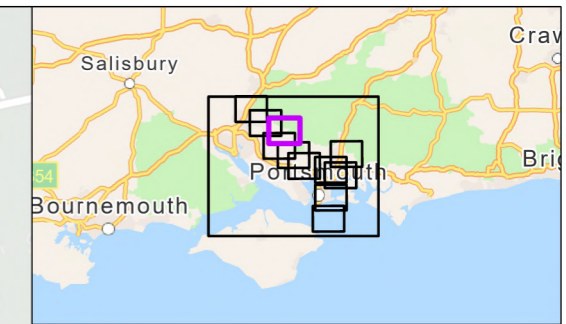
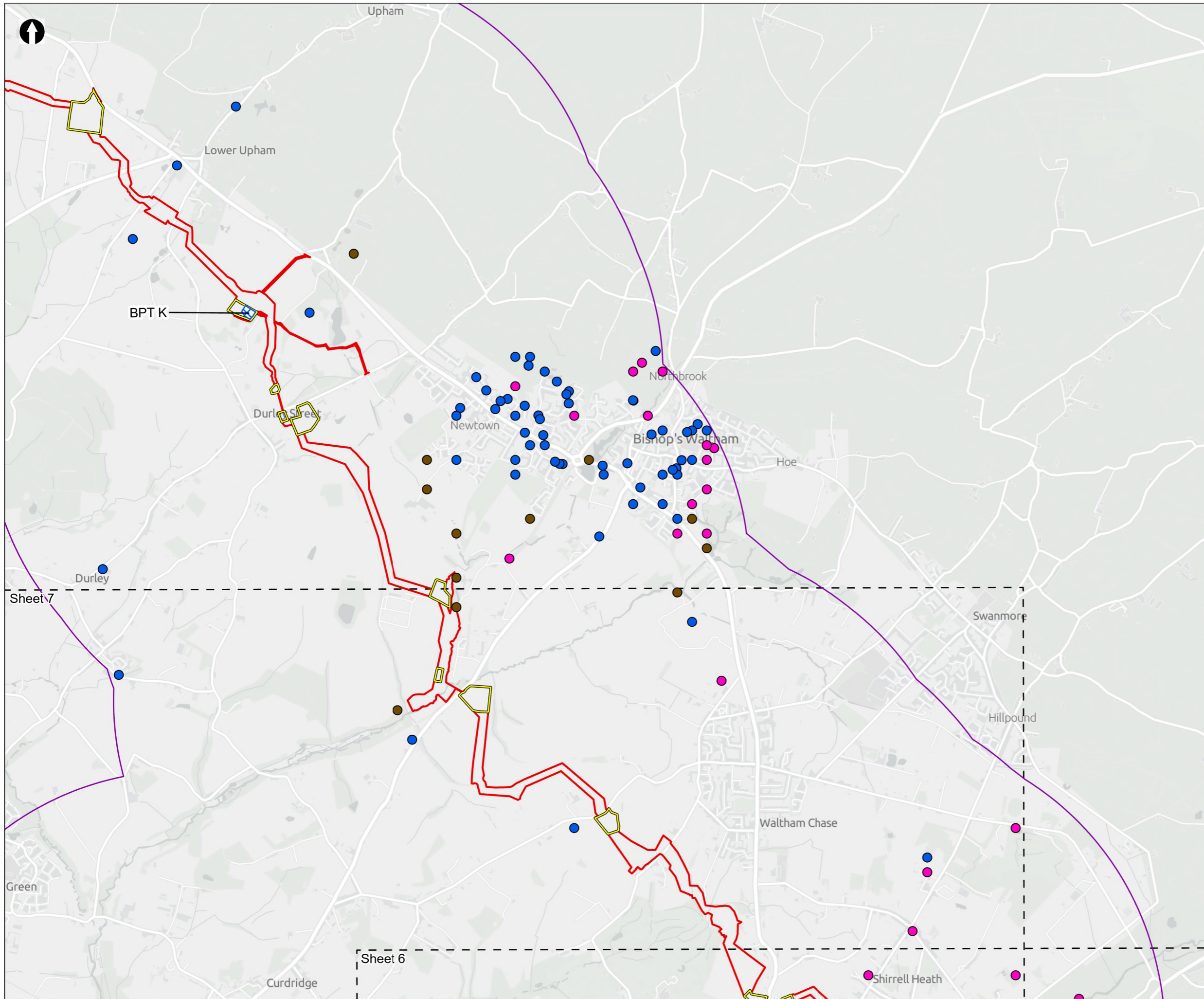
PROJECT TITLE
 Hampshire Water Transfer and Water Recycling Project



Figure 8.49
 Notable terrestrial invertebrate local record data within the desk study area
 Sheet 7 of 12

Drawn MW	GIS Checked DL	Checked MP	Approved AK
Scale at A3 1:25,000	Status Final	Revision 05	Security STD





Order Limits
 Desk study area
 Sheet Extent Boxes 1:25K
 Construction compounds
Terrestrial Invertebrates Status
● Section 41
● Nationally Rare
● Nationally Scarce
Above Ground Plant
 Break Pressure Tank

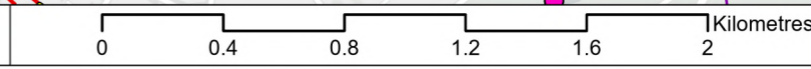
Coordinate system: British National Grid; Datum: OSGB 1936
 Data sources: © Crown copyright and database rights 2026 Ordnance Survey 0100031673. Sources: Esri, TomTom, Garmin, FAO, NOAA, USGS, © OpenStreetMap contributors, and the GIS User Community, Contains OS data © Crown Copyright and database right 2026. Contains data from OS Zoomstack

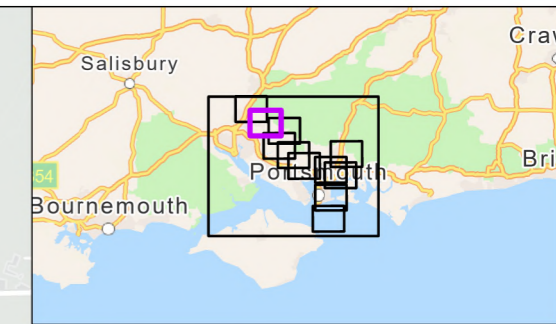
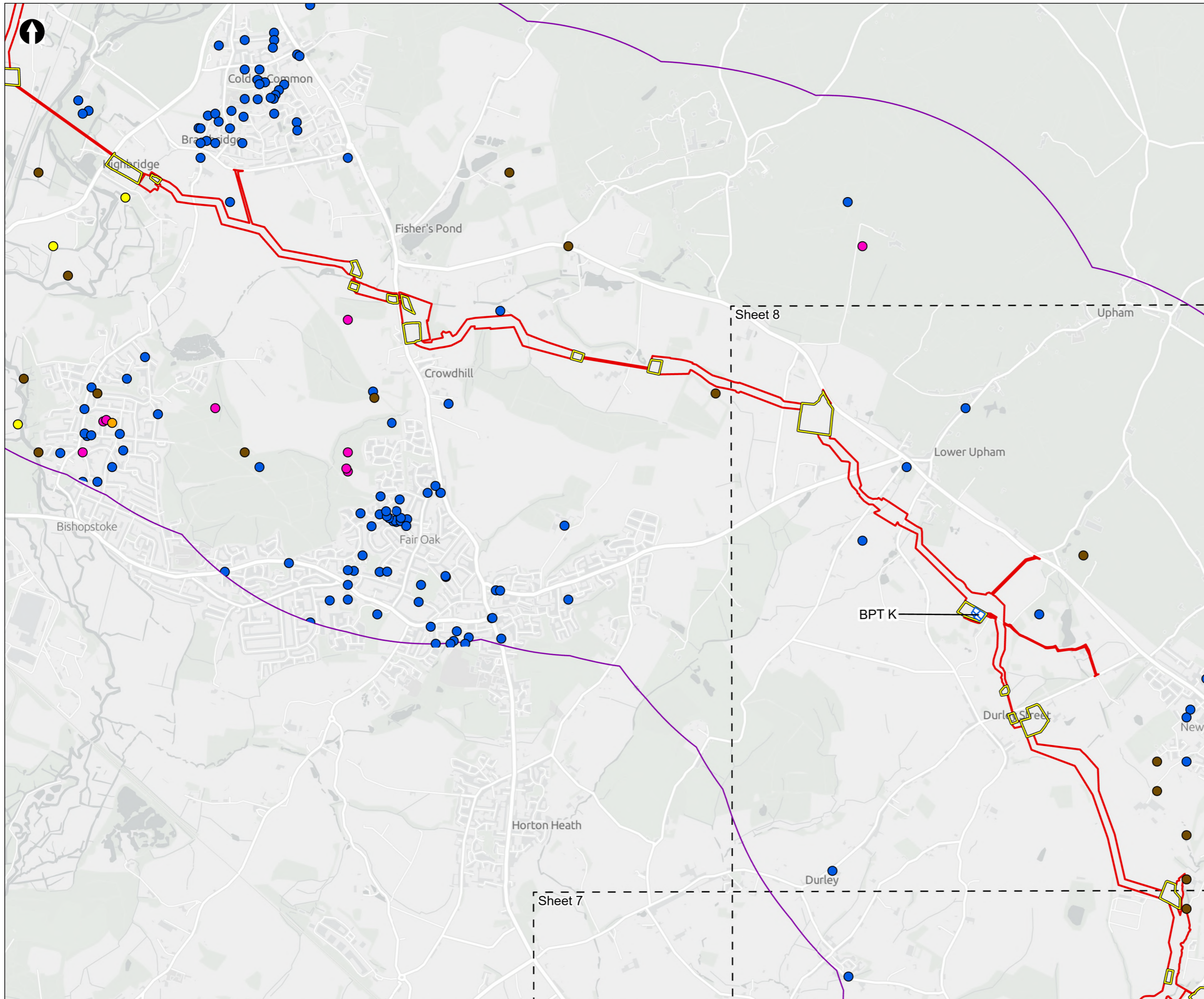
PROJECT TITLE
 Hampshire Water Transfer and Water Recycling Project



Figure 8.49
 Notable terrestrial invertebrate local record data within the desk study area
 Sheet 8 of 12

Drawn MW	GIS Checked DL	Checked MP	Approved AK
Scale at A3 1:25,000	Status Final	Revision 05	Security STD





- Order Limits
 - Desk study area
 - Sheet Extent Boxes 1:25K
 - Construction compounds
- Terrestrial Invertebrates Status**
- Schedule 5
 - Section 41
 - Nationally Rare
 - Nationally Scarce
 - Provisionally Nationally Scarce
- Above Ground Plant**
- X Break Pressure Tank

Coordinate system: British National Grid; Datum: OSGB 1936
 Data sources: © Crown copyright and database rights 2026 Ordnance Survey 0100031673. Sources: Esri, TomTom, Garmin, FAO, NOAA, USGS, © OpenStreetMap contributors, and the GIS User Community, Contains OS data © Crown Copyright and database right 2026. Contains data from OS Zoomstack

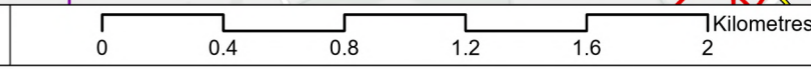
PROJECT TITLE
 Hampshire Water Transfer and Water Recycling Project

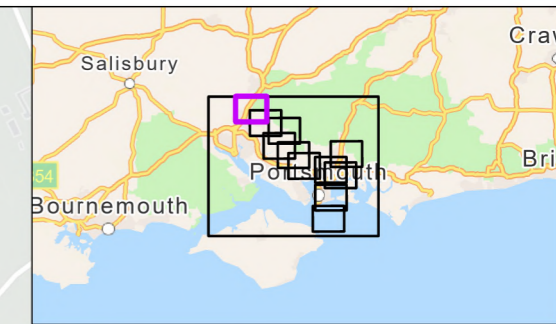
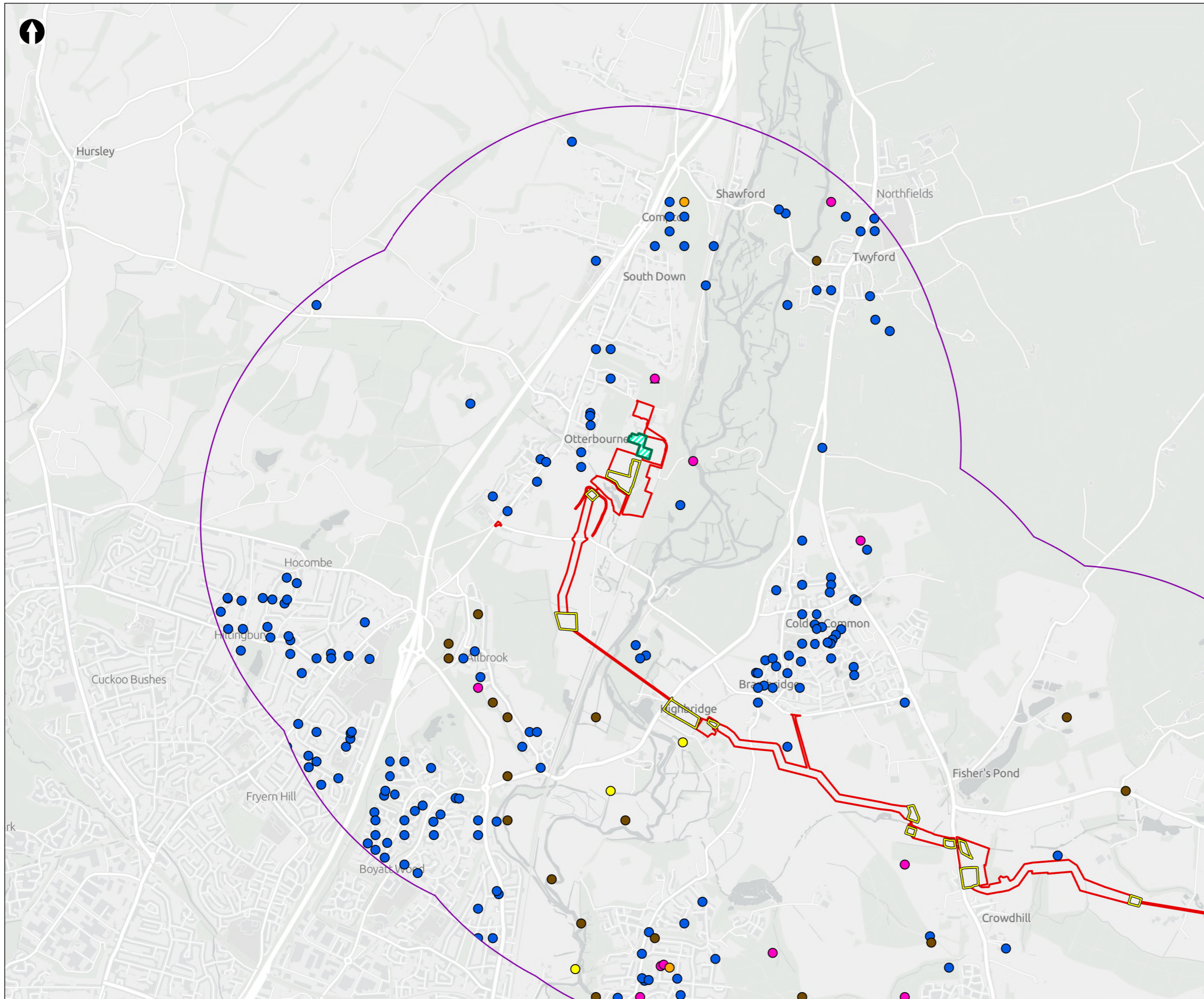


Figure 8.49
 Notable terrestrial invertebrate local record data within the desk study area
 Sheet 9 of 12

Drawn MW	GIS Checked DL	Checked MP	Approved AK
Scale at A3 1:25,000	Status Final	Revision 05	Security STD

Drawing Number
PC5223-RHD-ES-ZZ-D-Z-0073





Order Limits
 Desk study area
 Construction compounds
 Limits of Deviation for Otterbourne INNS Treatment Plant

Terrestrial Invertebrates Status

- Schedule 5
- Section 41
- Nationally Rare
- RDB 1
- RDB 3
- Provisional RDB 3
- RDB K
- Nationally Scarce
- Provisional Nationally Scarce

Coordinate system: British National Grid; Datum: OSGB 1936
 Data sources: © Crown copyright and database rights 2026 Ordnance Survey 0100031673. Sources: Esri, TomTom, Garmin, FAO, NOAA, USGS, © OpenStreetMap contributors, and the GIS User Community, Contains OS data © Crown Copyright and database right 2026. Contains data from OS Zoomstack

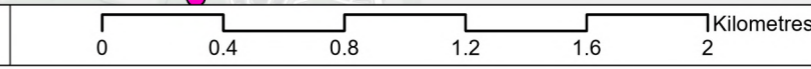
PROJECT TITLE
 Hampshire Water Transfer and Water Recycling Project

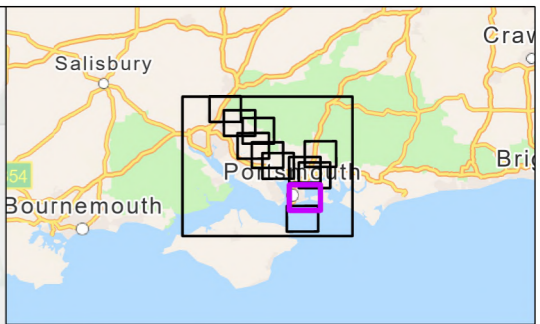
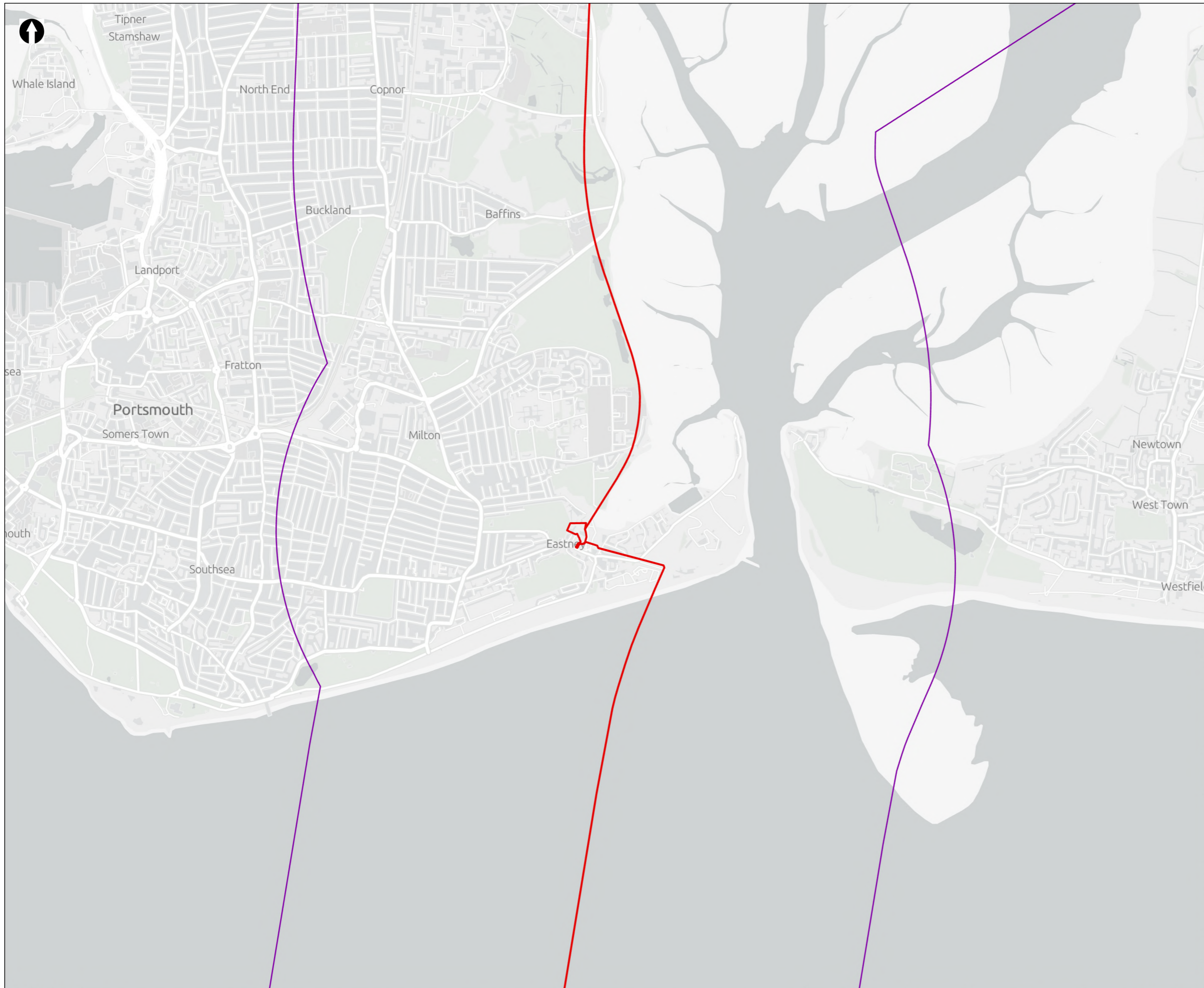


Figure 8.49
 Notable terrestrial invertebrate local record data within the desk study area
 Sheet 10 of 12

Drawn MW	GIS Checked DL	Checked MP	Approved AK
Scale at A3 1:25,000	Status Final	Revision 05	Security STD

Drawing Number
PC5223-RHD-ES-ZZ-D-Z-0073





Order Limits
 Desk study area

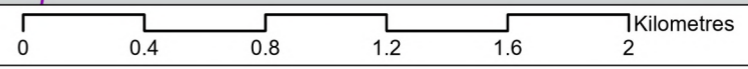
Coordinate system: British National Grid; Datum: OSGB 1936
 Data sources: © Crown copyright and database rights 2026 Ordnance Survey 0100031673. Sources: Esri, TomTom, Garmin, FAO, NOAA, USGS, © OpenStreetMap contributors, and the GIS User Community, Contains OS data © Crown Copyright and database right 2026. Contains data from OS Zoomstack

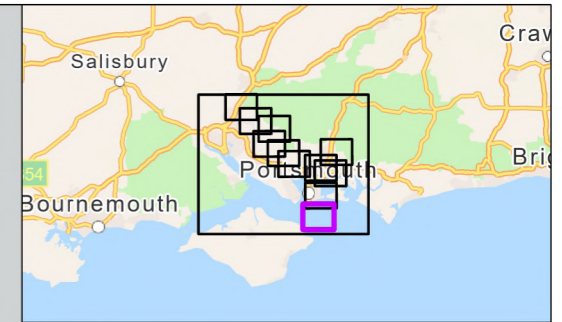
PROJECT TITLE
 Hampshire Water Transfer and Water Recycling Project



Figure 8.49
 Notable terrestrial invertebrate local record data within the desk study area
 Sheet 11 of 12

Drawn MW	GIS Checked DL	Checked MP	Approved AK
Scale at A3 1:25,000	Status Final	Revision 05	Security STD





- Order Limits
- Desk study area

Coordinate system: British National Grid; Datum: OSGB 1936
 Data sources: © Crown copyright and database rights 2026 Ordnance Survey 0100031673. Sources: Esri, TomTom, Garmin, FAO, NOAA, USGS, © OpenStreetMap contributors, and the GIS User Community, Contains OS data © Crown Copyright and database right 2026. Contains data from OS Zoomstack

PROJECT TITLE
 Hampshire Water Transfer and Water Recycling Project



Figure 8.49
 Notable terrestrial invertebrate local record data within the desk study area
 Sheet 12 of 12

Drawn MW	GIS Checked DL	Checked MP	Approved AK
Scale at A3 1:25,000	Status Final	Revision 05	Security STD

Drawing Number
PC5223-RHD-ES-ZZ-D-Z-0073

